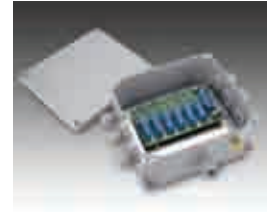
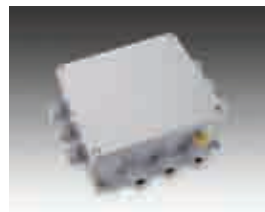
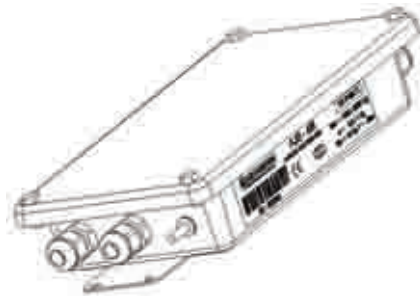




ABJ-Analogue Junction Box



Basic Features

- Connection of 1-10 load cells
- Robust enclosure with glands sealed to IP67
- Easy trimming via resistors or potentiometers
- Integrated surge protection devices
- Strain relief cable fittings
- EMI/ RFI safe

Application

- Floor scales
- Truck scales
- Tanks and Silos
- Hopper Scales

Operating Functions

- AJB for 4 load cells – Stainless steel enclosure
- AJB for 6 load cells – Stainless steel or Aluminium enclosure
- AJB for 8 load cells – Aluminium enclosure
- AJB for 10 load cells – Polyester enclosure

Specifications

ELECTROMAGNETIC COMPATIBILITY
CONNECTORS
TRIMMING
SURGE PROTECTION

EMI / RFI COMPLIANT TO EN45501 STANDARD
SCREW TERMINALS
SIGNAL TRIM BY RESISTORS OR POTENTIONMETER (max 20R)
90V CLAMP. WITHSTANDS UP TO 20KV AND UP TO 10KA

ABJ-4

ENCLOSURE
DIMENSIONS in mm (EXTERNAL)
PROTECTION CLASS
CABLE FITTINGS

STAINLESS STEEL
199 (L)x106(W)x43.7(H)
IP67
ST. ST. GLANDS PG9 (ACCEPTABLE CABLE DIAMETER)

ABJ-6

ENCLOSURE
DIMENSIONS in mm (EXTERNAL)
PROTECTION CLASS
CABLE FITTINGS

STAINLESS STEEL or ALUMINIUM
199 (L)x106(W)x43.7(H) -Aluminium: 240 (L)x200(W)x80(H)
IP67 (IP65 for aluminium version)
ST. ST. GLANDS PG9 (ACCEPTABLE CABLE DIAMETER 3-9mm)
PLASTIC GLANDS PG11 (ACCEPTABLE CABLE DIAMETER)

ABJ-8

ENCLOSURE
DIMENSIONS in mm (EXTERNAL)
PROTECTION CLASS
CABLE FITTINGS

ALUMINIUM or POLYESTER
240 (L)x200(W)x80(H) - Polyester: 120 (L)x318(W)x80(H)
IP65
CABLE GLANDS PG11 (ACCEPTABLE CABLE DIAMETER)

ABJ-10

ENCLOSURE
DIMENSIONS in mm (EXTERNAL)
PROTECTION CLASS
CABLE FITTINGS

POLYESTER
120 (L)x318(W)x80(H)
IP65
CABLE GLANDS PG11 (ACCEPTABLE CABLE DIAMETER 6-12mm)